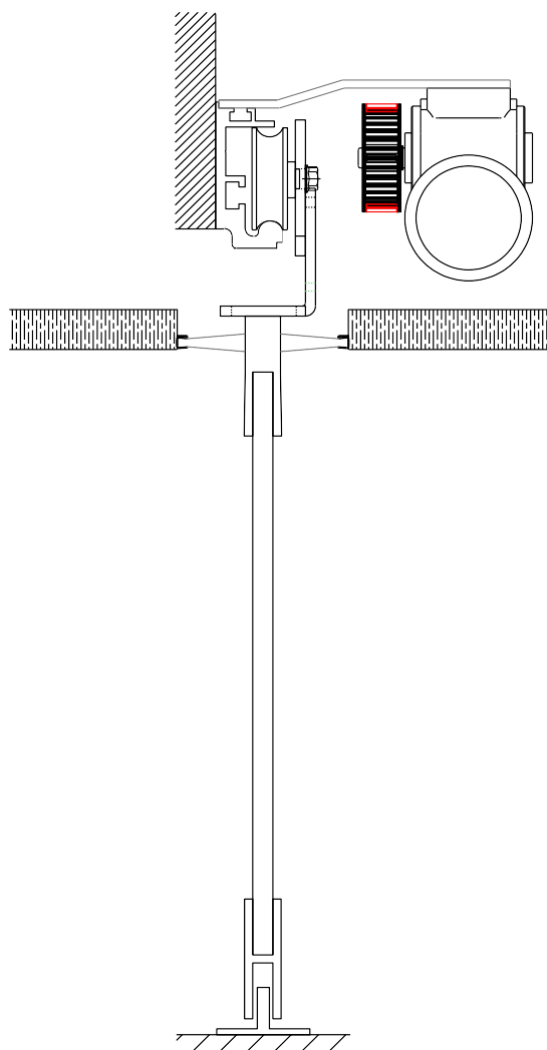


MODELS

SIDE VIEW



SERIES
MODEL

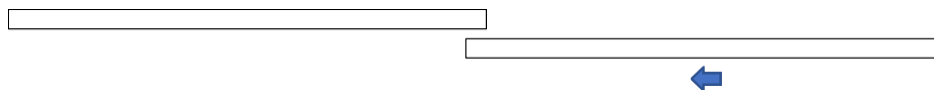
MP21
F14

Main features

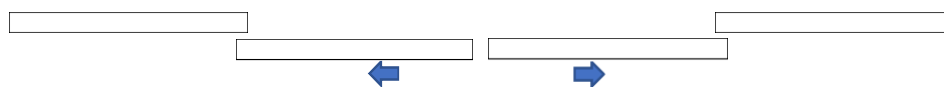
Layout	Inside false ceilings
Overall dimensions PxH	160 x 160 mm
Standard length	Up to 4000 mm
Maximum door weight	1 Leaf 150 kg 2 Leaves 200 kg
Traction unit	Motor c.c. / a.c.
Electronic command board	M.A.T. dMotion
Peripherals units and accessories	Infrared sensors Pushbuttons <i>dApp</i> User interface: 3 positions 5 positions Photocell Presence Sensors Optical barrier Anti black-out system

TYPE OF DOORS OPENING

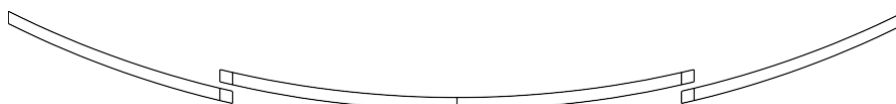
1AS – One lateral sliding door with right or left opening



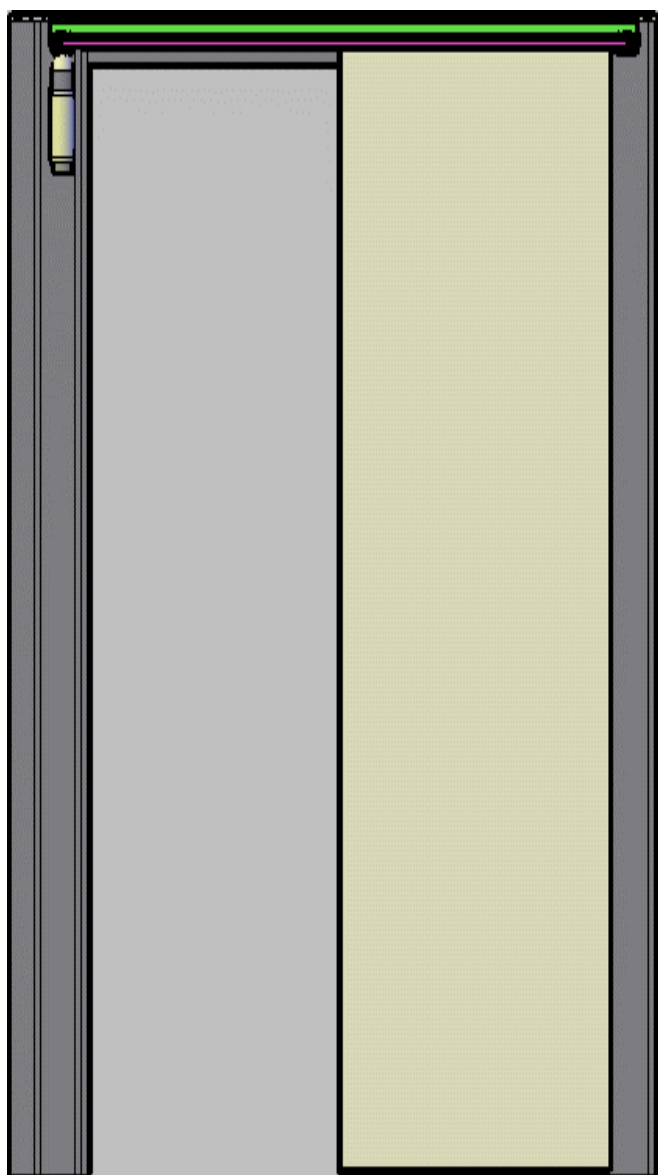
2AS – Two opposite sliding doors with central opening



Curve – Two curve sliding doors opposite with central opening



RETRACTABLE DOOR – SIDE MOTOR



SERIES
MODEL

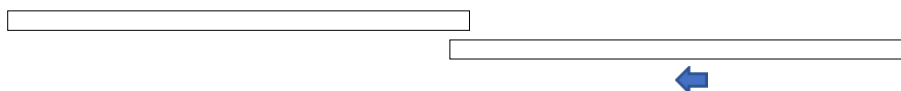
SC55
H53

Main features

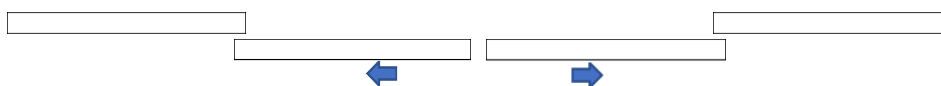
Layout	Concealed inside the wall
Overall dimensions PxH	Rail 50x50 mm Motor 80x300 mm
Passage opening width	Up to 2000 mm
Maximum door weight	1 Leaf 100 kg 2 Leaves 150 kg
Traction	Motor c.c. / a.c.
Electronic command board	M.A.T. dMotion
Peripherals units and accessories	Infrared sensors Pushbuttons <i>dApp</i> User interface: 3 positions 5 positions Photocell Presence Sensors Optical barrier Anti black-out system

TYPE OF DOORS OPENING

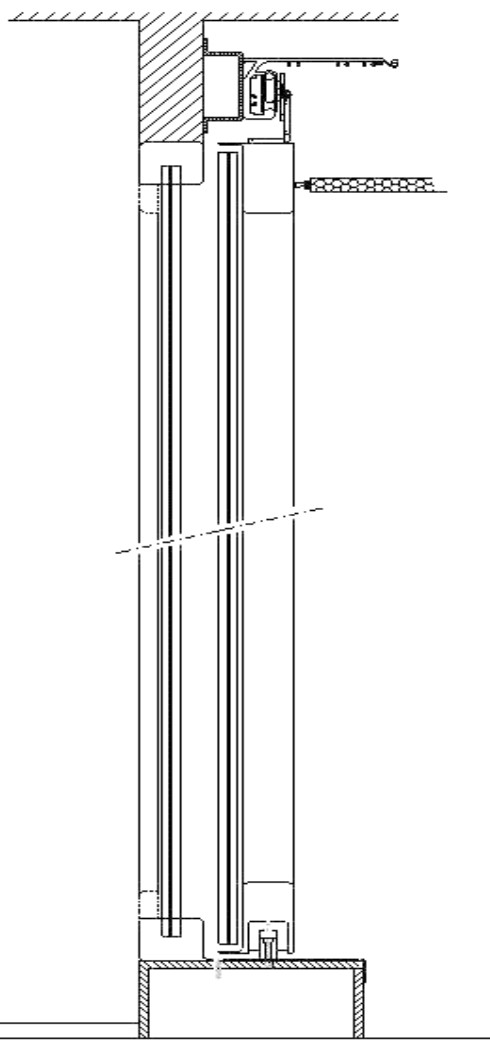
1AS - One lateral sliding door with right or left opening



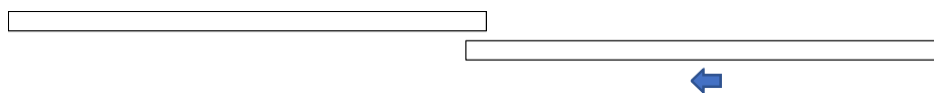
2AS – Two opposite sliding doors with central opening



SIDE VIEW

**SERIES CVN20
MODEL F18**
Main features:


Layout	Inside false ceilings
Overall dimensions PxH	160 x 180 mm
Standard length	Up to 4000 mm
Maximum door weight	1 Leaf 200 kg 2 Leaves 300 kg
Traction unit	Motor c.c. / a.c.
Electronic command board	M.A.T. dMotion
Peripherals units and accessories	Infrared sensors Pushbuttons dApp User interface: 3 positions 5 positions Photocell Presence Sensors Optical barrier Anti black-out system

TYPE OF DOORS OPENING
1AS – One lateral sliding door with right or left opening

2AS – Two opposite sliding doors with central opening
