

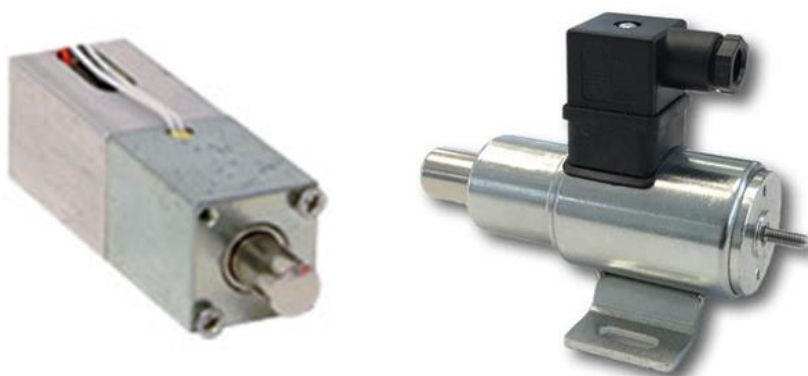
## Locking systems

To ensure a correct locking system of the doors (*e.g.* during sailing) there are two systems operated by the dMotion card and controlled by the switch program. The two systems are installed depending on the typology, dimensions, and usage of the automatic door.

### Electromagnetic pin

It consists of an electrically controlled steel slider, which engages the doors on a dedicated shape, preventing them from sliding; the position is electronically monitored to prevent harmful malfunctions.

- Power supply voltage: 24 Vdc
- Nominal current: 1.2 A
- Working stroke: 20 mm
- Service: 100% ED
- Operating temperature: 80°
- Degree of protection: IP40



### Retaining electromagnet

It is made up of a high-tightness solenoid, which acts magnetically on a plate mounted on the leaves, preventing any movement of the leaves.



- Power supply voltage:: 24 Vdc
- Nominal current: 0,7 A
- • Attraction force: 140Kg
- Service: 100% ED
- Degree of protection: IP40